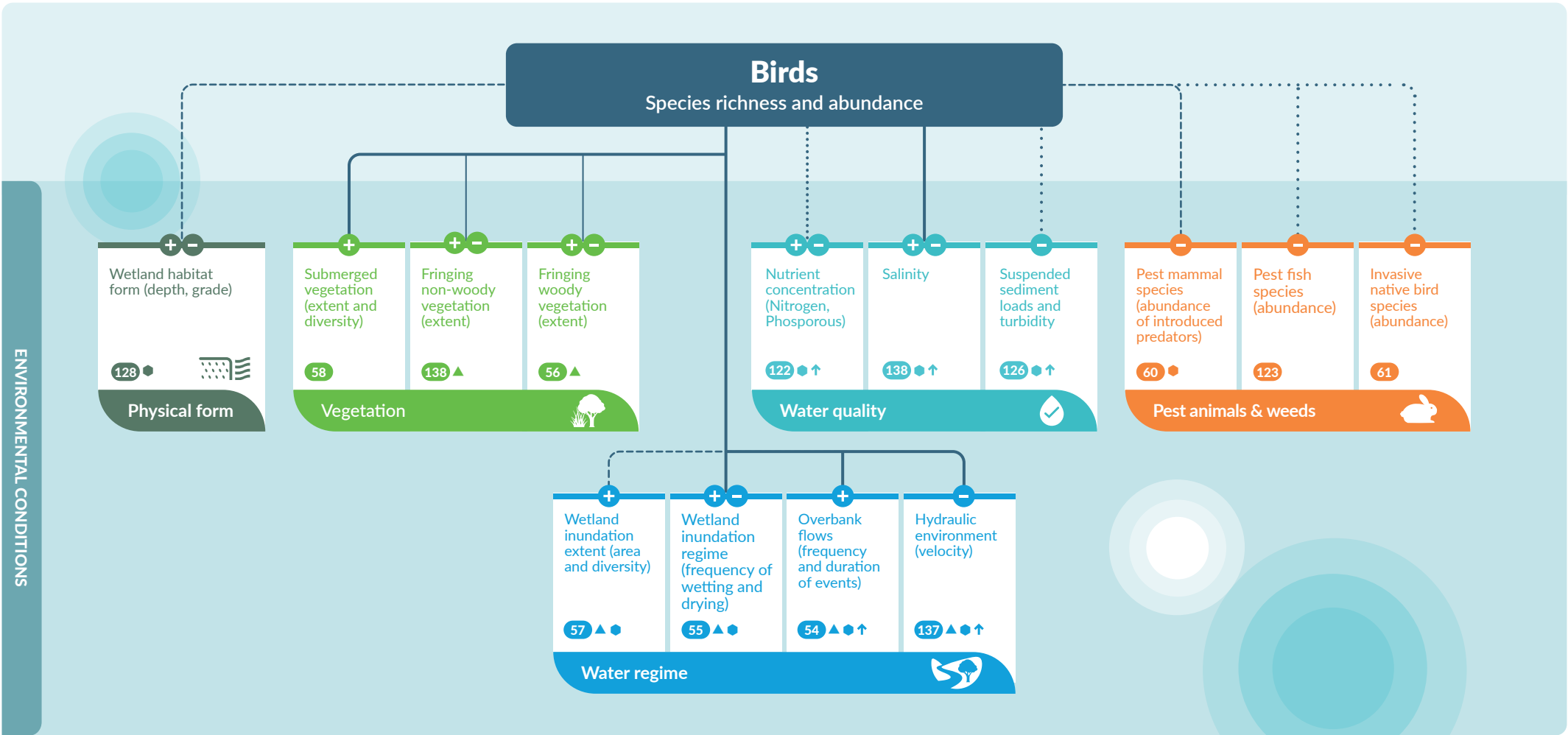




ENVIRONMENTAL CONDITIONS



**ACTIONS TO IMPROVE ENVIRONMENTAL CONDITIONS**

- Foundational activities
- Waterway management structures & operation
- Vegetation management
- Water licence and entitlement management
- Agricultural and forestry runoff management
- Urban stormwater and pollution management
- Pest animals and abundant wildlife management

Relationship strength (Strong or Moderate) Confidence (High or Medium)

Strong, High: —  
Strong, Medium: - - -  
Moderate, High: —  
Moderate, Medium: . . . .

Indicative relationship direction\*

Positive (+) (increase in condition will lead to *increase* in value)  
Negative (-) (increase in condition will lead to *decrease* in value)

\* These general relationships typically apply within the bounds of thresholds

Relationship ID: 00

Themes: ↑ Sensitive to upstream catchment  
▲ Climate change  
● Urbanization

Influence of actions on environmental conditions